

---

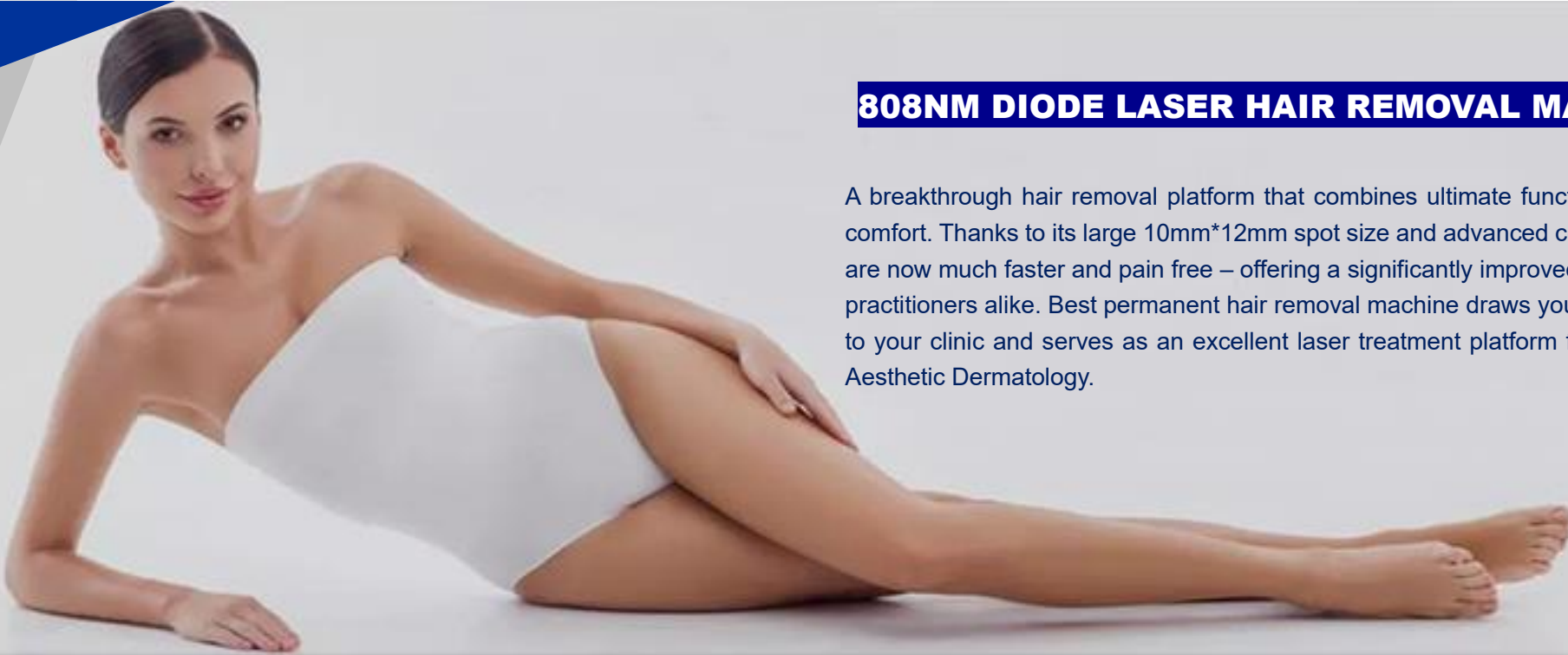
# 808NM Diode Laser

Stronger, Faster, Painless

---

Hair Removal, Skin Rejuvenation





## 808NM DIODE LASER HAIR REMOVAL MACHINE PL-115

A breakthrough hair removal platform that combines ultimate functionality with unparalleled comfort. Thanks to its large 10mm\*12mm spot size and advanced cooling system, treatments are now much faster and pain free – offering a significantly improved solution for patients and practitioners alike. Best permanent hair removal machine draws your patients and customers to your clinic and serves as an excellent laser treatment platform for them into the world of Aesthetic Dermatology.



### Large Spot Size

**40% faster!**

808nm Diode Laser features large spot size of 10mm\*12mm. This breakthrough applicator makes treatments much faster and pain free, significantly cutting treatment times and ensuring a more comfortable experience for patients.



### TEC + Sapphire Contact Cooling Continuous Contact Cooling

TEC + Sapphire is an advanced technology that continuously cools skin and facilitates range-controlled temperature throughout the entire treatment. The TEC + Sapphire tip minimizes epidermal risks while maintaining heat within the dermis where hair follicles are treated. Temperature remains controlled and constant which contributes to the diode's efficiency. Patients can now enjoy a completely pain-free, cool and comfortable experience throughout the session.



### User Friendly Screen Display Easy For

After doctors choose the skin type, hair area and thickness before treatment, Proposed parameter will upload. Doctors should adjust based on the proposed parameters and patients' feeling during treatment as different patients has different reaction.



### TEC + Sapphire Contact Cooling Continuous Contact Cooling

USA imported "Plug and Play" handpiece connector, translate into reliable energy and long lasting machines capable of continuous work in busy clinics or beauty massages.



808nm

## Diode Laser System Highlights





**At this menu screen, there is a three treatment functions: fast mode, normal mode and skin rejuvenation model.**

## **Maximize Your Potential**

It empowers better management processes simply and seamlessly, reflecting a real time status of platforms, applicators, and productivity, letting you access data and make adjustments without losing time.

### **Fast mode.**

It is FHR (Fast hair removal) mode, this mode is suitable for public treatment, easy to start a treatment, most popular with beautician in beauty salon, spa centers, etc.

### **Normal mode.**

It is standard hair removal mode, according to the different individual to have a targeted treatment, designed for doctor and professional trained operator use in medical clinic, surgical hospital, etc.

### **Skin Rejuvenation**

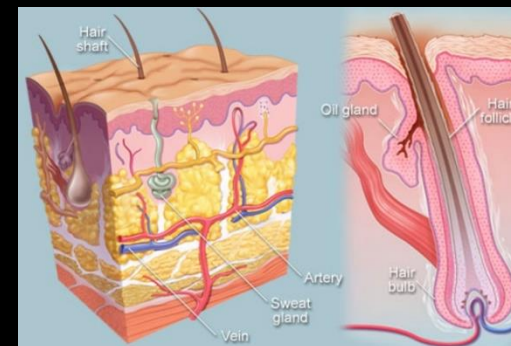
It is a additional function of skin rejuvenation with low energy shooting to make face smooth, tender and younger.



**Superior Results**

## DIODE LASER WORKING PRINCIPLE

Diode laser hair removal technology is based on the selective dynamics of light and heat. The laser goes through the skin surface to reach the root of hair follicles, light can be absorbed and converted into heat damaged hair follicle tissue. So that hair loss regeneration without injury surrounding tissue. With slight pain, this is the most the safest, quick, and permanent technique for hair removal now.



Diode laser equipment adopts 810nm, which is particularly effective to hair follicles melanocytes without any injury of surrounding tissue. The laser light can be absorbed by melanin in the hair shaft and hair follicles, and then converted into heat, thus increasing the hair follicle temperature. When the temperature raises high enough, the hair follicle structure will be damaged irreversibly, and then disappeared after a period of natural physiological.

## 810 NM Optimal Wavelength

The 810nm is a classic hair removal wavelength, offering deep penetration of the hair follicle with high average power, and a rapid repetition rate and a large 1.2 cm<sup>2</sup>. spot size for time-efficient treatments. The 810nm has a moderate melanin absorption level, making it safe for darker skin types. Its deep penetration capabilities target the Bulge and Bulb of the hair follicle, while moderate tissue depth penetration makes it ideal for treating the arms, legs, cheeks and chin.



## Handlepiece With Large Spot Size

This exclusive applicator is a valuable asset for any clinic. With its large 10mm\*12mm spot size, it facilitates increased treatment coverage to significantly reduce treatment time and make the process easier and safer for patients. With 10mm\*12mm spot size, hair removal is quick, efficient and convenient.

## Fast 808nm

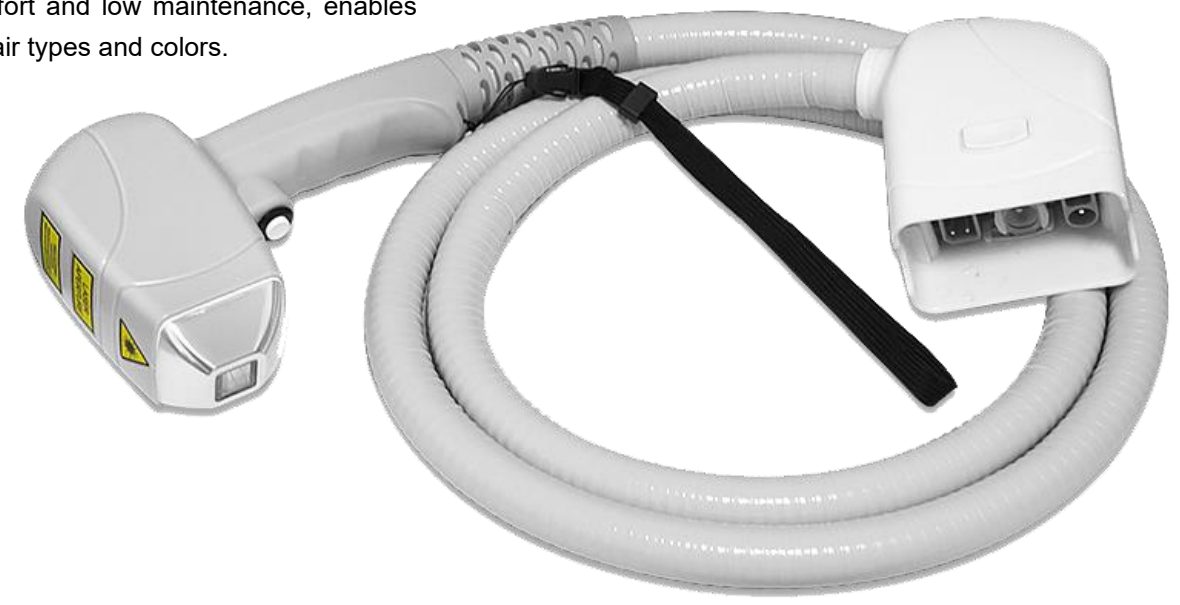
Complete more treatment sessions in less time with this large spot size applicator. Treat larger areas faster, while offering patients a safe and highly effective hair removal procedure.

## Diode Laser

The Power Of Diversity Powerful absorption, combined with continuous cooling, treatment coverage, comfort and low maintenance, enables the treatment of a wide range of hair types and colors.

## Diode Laser stack

Special designed for diode laser hair removal machine  
Diode laser bar from Germany  
Laser power from 300W-1200W  
Over 10,000 hours life time



**Diode laser  
hair removal machine  
PL-115 benefits:**



With its large 10mm\*12mm spot size for quick treatment



TEC + Sapphire Contact Cooling



10 million shots



450W handle with 6 bars



Germany DILAS laser bar



Japan imported Mitsubishi TEC cooling plates



I-VI skin tones and tanned skin



12 hours non-stop continue working



## Technical Specifications

FUSE	Max 10A
FREQUENCY	1~10Hz
NET WEIGHT	25KG
GROSS WEIGHT	36KG
INPUT POWER	1200W
TEMPERATURE	0~40°C
PULSE WIDTH	10~200ms
HANDLE WITH 6 BARS	350W
ENERGY DENSITY	0~150J/c m <sup>2</sup>
PACKAGE SIZE	106cm*45cm*46cm
MODE	Single Pulse and continuous pulse
COOLING SYSTEM	water cooling +wind cooling+ Semiconductor
LASER TYPE	High Quality 808nm Semiconductor Laser Beam Source
ELECTRICAL REQUIREMENT	AC 220V± 10% 50Hz; AC 110V ±10% 60Hz

**808nm**  
**Diode Laser System Highlights**  
Hair Removal, [Skin Rejuvenation](#)



Whatsapp: 0086 15001300057

Web: [www.prettyLasers.com](http://www.prettyLasers.com)

Email: [info@prettylasers.com](mailto:info@prettylasers.com)

Phone: +0086 15001300057

Contact With  
PrettyLasers

